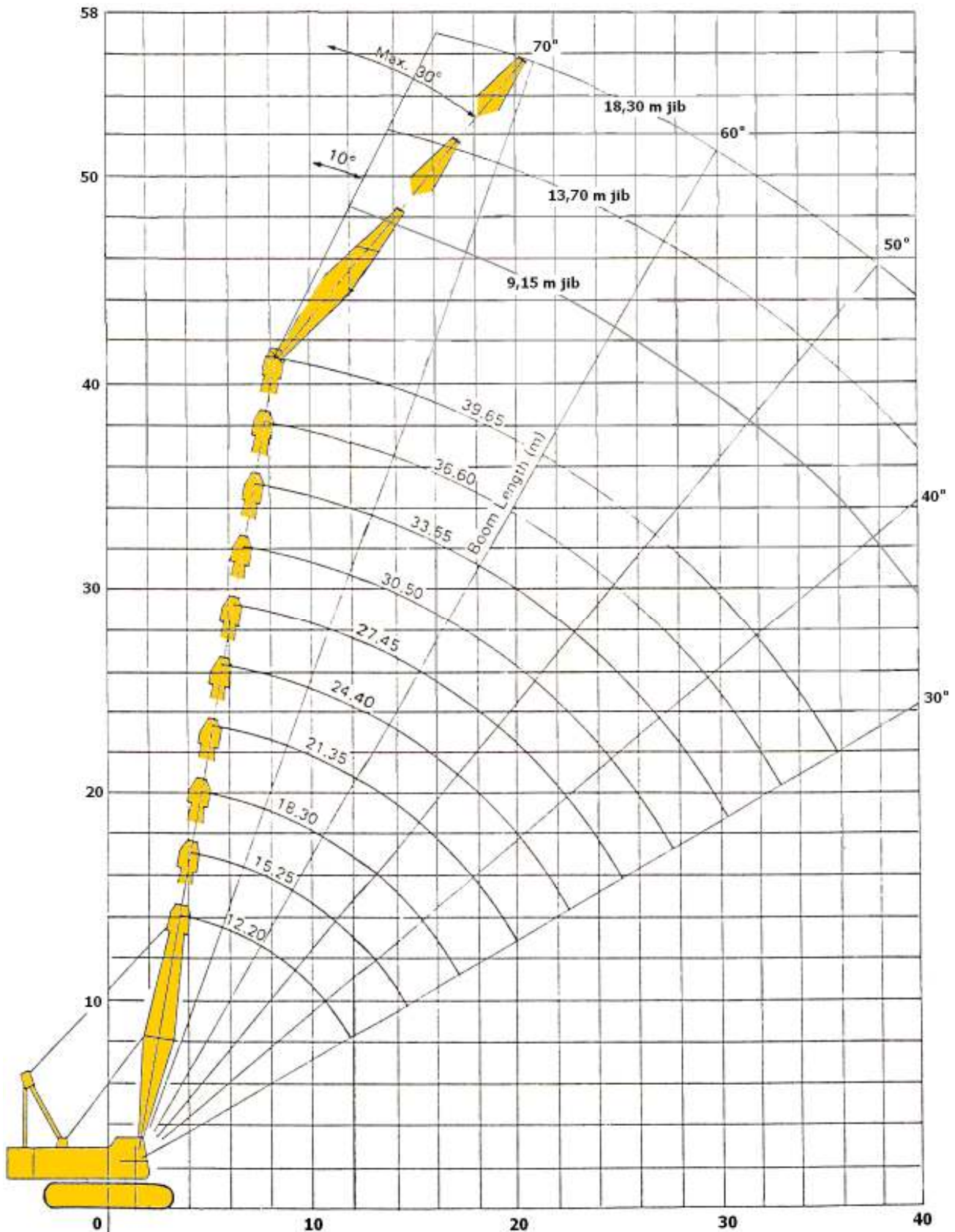


Sumitomo LS-218RH₅ + Jib 18.30 m

Nostoteho **80 t**
Nostosäde **36 m**
Nostokorkeus **55 m**


**KYMEN
NOSTOKONE**



Peruspuomi

Säde	12.20	15.25	18.30	21.35	24.40	27.45	30.50	33.55	36.60	39.65
3.5	80.0									
4.0	72.8									
4.5	62.0	61.9								
5.0	54.5	54.5	51.5							
6.0	40.9	40.8	40.7	40.2	38.2					
7.0	32.6	32.5	32.4	32.3	32.2	31.3				
8.0	26.9	26.8	26.7	26.6	26.5	26.4	26.0	25.5		
9.0	22.9	22.8	22.7	22.6	22.5	22.5	22.4	22.1	21.7	21.2
10.0	19.9	19.8	19.7	19.6	19.5	19.5	19.4	19.3	19.2	18.8
11.0	17.6	17.5	17.4	17.3	17.2	17.1	17.1	17.0	16.9	16.8
12.0	15.7	15.6	15.5	15.4	15.3	15.3	15.2	15.1	15.0	15.0
14.0		12.7	12.6	12.5	12.4	12.4	12.3	12.2	12.1	12.0
16.0			10.6	10.5	10.4	10.3	10.3	10.2	10.1	10.0
18.0			9.1	9.0	8.9	8.9	8.8	8.7	8.6	8.5
20.0				7.9	7.8	7.7	7.6	7.5	7.4	7.3
22.0					6.8	6.7	6.7	6.6	6.5	6.4
24.0						6.0	5.9	5.8	5.7	5.6
26.0							5.2	5.1	5.0	4.9
28.0							4.6	4.5	4.4	4.3
30.0								4.0	3.9	3.8
32.0									3.4	3.3
34.0										2.9
36.0										2.5

Peruspuomi 39.65 + Jib

Jibin pituus	9.15 m		13.70 m		18.30 m	
Säde	10°	30°	10°	30°	10°	30°
11.0	10.0					
12.0	10.0		6.2			
14.0	10.0	5.0	6.2			
16.0	9.2	5.0	6.2	5.0	4.0	
18.0	8.1	5.0	6.2	5.0	4.0	
20.0	7.0	5.0	6.2	5.0	4.0	3.2
22.0	6.1	5.0	6.1	5.0	4.0	3.2
24.0	5.3	5.0	5.3	5.0	4.0	3.2
26.0	4.7	4.7	4.7	4.7	4.0	3.2
28.0	4.2	4.2	4.2	4.2	4.0	3.2
30.0	3.8	3.8	3.8	3.8	3.8	3.2
32.0	3.4	3.4	3.4	3.4	3.4	3.2
34.0	3.0	3.0	3.0	3.0	3.0	3.0
36.0	2.7	2.7	2.7	2.7	2.7	2.7

Peruspuomin taulukosta tehtävät vähennykset nostokoukkujen / Jibin ollessa asennettuna.

Koukku	80 t	50 t	30 t	10 t	Jibin pituus	9.15 m	13.70 m	18.30 m
Omapaino	1.10 t	0.84 t	0.64 t	0.40 t	Omapaino	1.50 t	2.10 t	2.80 t

